

AFTERCARE INSTRUCTIONS

Your fitting has a high quality finish and should be treated with care to preserve the visible surfaces.

All surface finishes will wear if not cleaned correctly, the only safe way to clean your mixer is to wipe with a soft damp cloth. Stains can be removed using washing up liquid. All bath cleaning powders and liquids will damage the surface of your fitting, even the non-scratch cleaners. **NOTE: Never use abrasive detergents or disinfectants or those containing alcohol, hydrochloric acid or phosphoric acid.**

Bristan recommend E-Cloth for cleaning all of our bathroom & kitchen products. Using just water, E-cloth gives a smear free, deep clean by breaking up and holding dirt, which normal cloths leave behind. Order through your Bristan stockist. (ORDER CODE: ECLOTH)



GUARANTEE

All products are manufactured to the highest standards and a 5 year guarantee covers any defect in manufacture.

NOTE: The 5-year guarantee on the cartridge is invalidated if damaged by any waterborne debris.

All products must have access for servicing or replacement during the life of the product.

In the interests of continuous product development we reserve the right to alter specification as necessary

PRODUCT CODE:

PRODUCT IDENTIFICATION CODE LASER ETCHED ON PRODUCT
Installer please fill in code here _____.(Where applicable)

TELEPHONE HELPLINE! +44 (0)844 701 6273

Bristan Group Limited
Birch Coppice Business Park
Dordon
Tamworth
Staffordshire
B78 1SG
UK
A Masco Company
Website: www.bristan.com
Telephone: +44 (0) 844 701 6274
Facsimile: +44 (0) 844 701 6275

BRISTAN

1901 Luxury Bath Shower Mixer

Fitting Instructions & Contents List

Please keep these instructions for future reference and request of replacement part

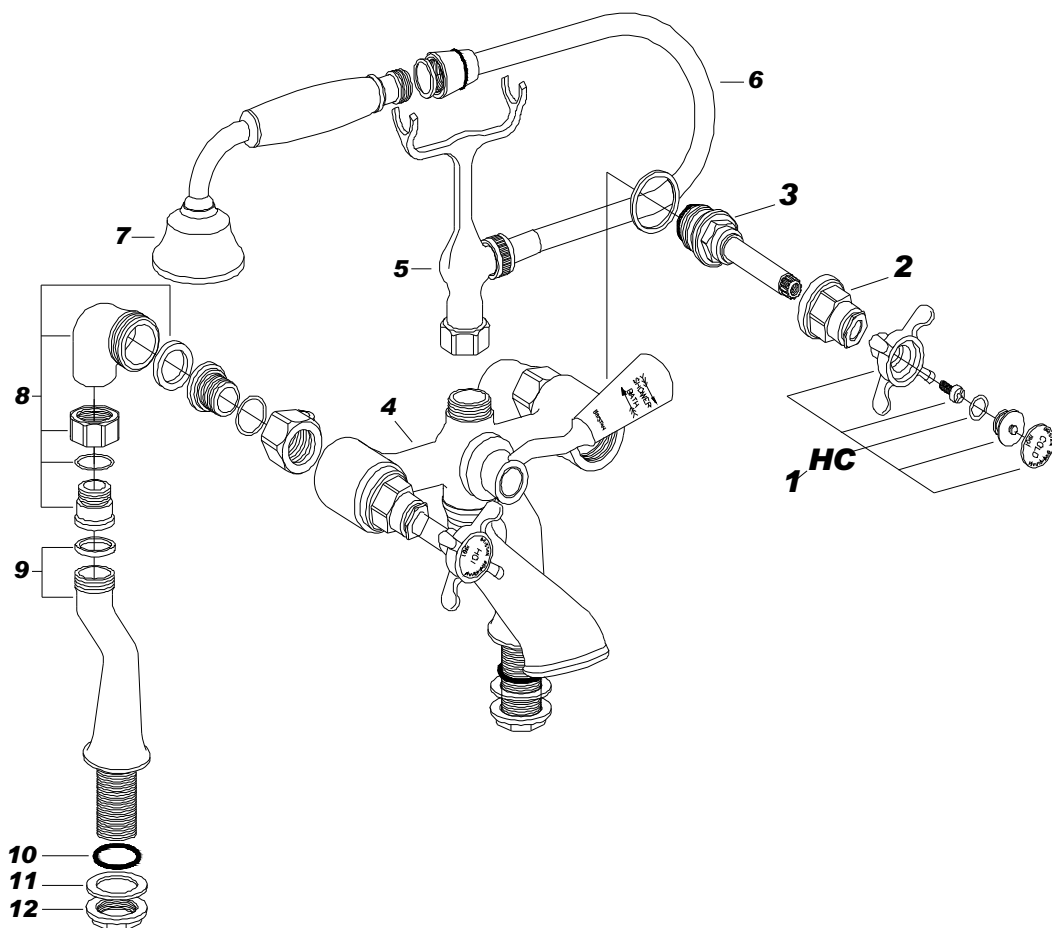
WATER PRESSURE

This mixer is suitable for use at all supply pressures. However for optimum use both the hot and cold supplies should be reasonably balanced.

If the fitting are installed at low pressure (tank fed), then the minimum height from the outlet nozzle to the underside of the cold tank should be 1 metre to ensure adequate shower performance.

This mixer should be installed in compliance with the Water Regulations. Where the supplies are unbalanced, i.e hot water from cylinder tank/cold from the mains, approved check valves must be fitted in the supply pipes

For further details contact your Local Water Authority.



CONTENTS

- | | | |
|--------------------|-------------------|--------------------|
| 1. Handle Assembly | 5. Cradle | 9. Leg Assembly |
| 2. Shroud | 6. Hose | 10. Washer |
| 3. Valve | 7. Handset | 11. Backnut Washer |
| 4. Body Assembly | 8. Elbow Assembly | 12. Backnut |

INSTALLATION

1. Identify all components and check for completeness, particularly before commencing installation.
2. Fit the legs (9) to the body (4) using the sealing washers.
3. Fit the mixer body (4) to the bath using the backnuts (12) and backnut washers (11), then connect the hot and cold water supplies.
4. Fit the cradle (5), if not already fitted, using the large sealing washer.
5. Fit the hose (6) to the cradle (5) and the handset (7) using the small sealing washers.
6. Use the handles (1), fully open both valves, letting them run for a few minutes to flush the system.
7. Operate the mixer in both bath and shower mode. To switch from bath to shower Mode, move the diverter handle from one extreme to the other.
8. Check all joints and connections for leaks.

MAINTENANCE

If the fitting begins to drip

1. Turn off the water supply
2. Remove handles (1) from shroud (2) by removing the indices and then unscrewing the screw. Pull the handle (1) off, then unscrew shroud (2) from valve (3) and then remove it.
3. Once removed, carefully clean seating and rubber washer.
4. Replace valve and then turn on the water supply.
5. If problem persists contact our helpline quoting the produce code overleaf.

N.B. Please write the name and product code of your fitting in the spaces provided overleaf. This will ensure a speedier service if you should need to phone the helpline.

PLEASE NOTE:

In the unlikely event you find a part missing, please contact our Customer Service helpline on **0844 701 6273** for immediate dispatch of part